



QURAN READER PRO

A product of www.SearchTruth.com

User Manual & Installation Guide

QURAN READER PRO

User Manual & Installation Guide

© Search Truth
www.SearchTruth.com

Table of Contents

END USER LICENSE AGREEMENT	1
Definitions	1
License Grants.....	1
License Restrictions.....	2
Ownership.....	2
WARRANTY DISCLAIMER.....	2
LIMITATION OF LIABILITY.....	3
Basis of Bargain.....	3
General	4
INTRODUCTION.....	5
INSTALLATION GUIDE	7
STEP 1 - Before you Begin	7
STEP 2 - Choosing the right CLDC version	8
STEP 3 – Selecting the Translation to be installed	9
STEP 4 – Transfer the file to your Mobile	9
STEP 5 – Open the file from your Mobile.....	9
USING QURAN READER PRO	11
Starting to use Quran Reader Pro.....	11
Main Chapter List (Index).....	11
Going to the Start or End of the Index quickly.....	12
Loading a Surah.....	15
Saving a Bookmark.....	16
Loading a saved Bookmark.....	18
Going to the Start or End of the Chapter quickly	19
Jumping to a particular verse	19
Jumping to a particular chapter.....	20
Zooming-In and Zooming-Out.....	22
Zoom-In	22
Searching the whole of the Holy Quran	23
Switching Preview On.....	26
Searching in a single chapter of the Holy Quran.....	28

Showing last searched results	30
Reading Tafsir of the Holy Quran.....	31
SUPPORTED MOBILES.....	33
FAQs (FREQUENTLY ASKED QUESTIONS).....	40

END USER LICENSE AGREEMENT

"QURANREADER PRO" END USER LICENSE AGREEMENT

IMPORTANT: THIS SOFTWARE END USER LICENSE AGREEMENT ("EULA") IS A LEGAL AGREEMENT BETWEEN YOU (EITHER AN INDIVIDUAL OR, IF PURCHASED OR OTHERWISE ACQUIRED BY OR FOR AN ENTITY, AN ENTITY) AND SEARCHTRUTH (www.searchtruth.com). READ IT CAREFULLY BEFORE COMPLETING THE INSTALLATION PROCESS AND USING THE SOFTWARE. IT PROVIDES A LICENSE TO USE THE SOFTWARE AND CONTAINS WARRANTY INFORMATION AND LIABILITY DISCLAIMERS. BY SELECTING THE DOWNLOAD OR INSTALL BUTTON AND/OR USING THE SOFTWARE, YOU ARE CONFIRMING YOUR ACCEPTANCE OF THE SOFTWARE AND AGREEING TO BECOME BOUND BY THE TERMS OF THIS AGREEMENT. IF YOU DO NOT AGREE TO BE BOUND BY THESE TERMS, THEN DO NOT INSTALL OR USE THE SOFTWARE.

Definitions

"Authorized Operating Systems" means an embedded/mobile/PDA device capable of running MIDP 1.0/2.0 and CLDC 1.0/1.1 applications. This excludes all other Desktop operating systems such as Microsoft Windows 95, 98, 2000, NT, ME, XP Home, XP Professional, and XP Tablet PC Edition, Macintosh operating systems, Linux operating systems, and Solaris operating systems.

"Device" is either a mobile or a PDA/embedded device that runs an Authorized Operating System.

"SearchTruth" or "www.searchtruth.com" means Search Truth and its licensors, if any.

"Software" means only the QuranReader Pro supplied by SearchTruth therewith, and corresponding documentation, associated media, printed materials, and online or electronic documentation, and all updates or upgrades of the above that are provided to you.

For the avoidance of doubt, no desktop operating systems or any other operating systems other than the ones that are explicitly installed on mobile devices are included as Authorized Operating Systems.

License Grants

You may install and use the Software on a single mobile/PDA that runs an Authorized Operating System. A license for the Software may not be shared, installed or used concurrently on different devices.

You agree that SearchTruth may audit your use of the Software for compliance with these terms at any time, upon reasonable notice. In the event that such audit reveals any use of the Software by you other than in full compliance with the terms of this Agreement, you shall reimburse SearchTruth for all reasonable expenses related to such audit in addition to any other liabilities you may incur as a result of such non-compliance.

Your license rights under this EULA are non-exclusive.

Certain rights are not granted under this Agreement, but may be available under a separate agreement.

License Restrictions

You may not use the Software on any un-authorized operating systems.

You may not make or distribute copies of the Software, or electronically transfer the Software from one computer/mobile to another or over a network.

You may not alter, merge, modify, adapt or translate the Software, or decompile, reverse engineer, disassemble, or otherwise reduce the Software to a human-perceivable form.

You may not sell, rent, lease, or sublicense the Software.

You may not modify the Software or create derivative works based upon the Software.

In the event that you fail to comply with this EULA, SearchTruth may terminate the license and you must destroy all copies of the Software (with all other rights of both parties and all other provisions of this EULA surviving any such termination).

You shall not use the Software to develop any software or other technology having the same primary function as the Software, including but not limited to using the Software in any development or test procedure that seeks to develop like software or other technology, or to determine if such software or other technology performs in a similar manner as the Software.

Ownership

The foregoing license gives you limited license to use the Software. SearchTruth and its suppliers retain all right, title and interest, including all copyright and intellectual property rights, in and to, the Software and all copies thereof. All rights not specifically granted in this EULA, including Federal and International Copyrights, are reserved by SearchTruth and its suppliers.

WARRANTY DISCLAIMER

SEARCHTRUTH PROVIDES NO WARRANTIES FOR THE SOFTWARE FOR UNSUPPORTED DEVICES BUT MAY BE LIABLE TO PROVIDE THE END USER WITH REMEDIES OR UPDATES FREE OF CHARGE.

SEARCHTRUTH DOES NOT WARRANT THAT THE SOFTWARE IS ERROR-FREE OR WILL OPERATE WITHOUT INTERRUPTION. THE SOFTWARE IS NOT DESIGNED, INTENDED OR LICENSED FOR USE IN HAZARDOUS ENVIRONMENTS REQUIRING FAIL-SAFE CONTROLS, INCLUDING WITHOUT LIMITATION, THE DESIGN, CONSTRUCTION, MAINTENANCE OR OPERATION OF NUCLEAR FACILITIES, AIRCRAFT NAVIGATION OR COMMUNICATION SYSTEMS, AIR TRAFFIC CONTROL, AND LIFE SUPPORT OR WEAPONS SYSTEMS. SEARCHTRUTH SPECIFICALLY DISCLAIMS ANY EXPRESS OR IMPLIED WARRANTY OF FITNESS FOR SUCH PURPOSES.

IF APPLICABLE LAW REQUIRES ANY WARRANTIES WITH RESPECT TO THE SOFTWARE, ALL SUCH WARRANTIES ARE LIMITED IN DURATION TO NINETY (90) DAYS FROM THE DATE OF DELIVERY.

NO ORAL OR WRITTEN INFORMATION OR ADVICE GIVEN BY SEARCHTRUTH, ITS DEALERS, DISTRIBUTORS, AGENTS OR EMPLOYEES SHALL CREATE A WARRANTY OR IN ANY WAY INCREASE THE SCOPE OF ANY WARRANTY PROVIDED HEREIN. SEARCHTRUTH SHALL HAVE NO RESPONSIBILITY IF THE SOFTWARE HAS BEEN ALTERED IN ANY WAY, OR FOR ANY FAILURE THAT ARISES OUT OF USE OF THE SOFTWARE WITH OTHER THAN A RECOMMENDED HARDWARE CONFIGURATION, PLATFORM OR OPERATING SYSTEM.

LIMITATION OF LIABILITY

NEITHER SEARCHTRUTH NOR ITS SUPPLIERS SHALL BE LIABLE TO YOU OR ANY THIRD PARTY FOR ANY INDIRECT, SPECIAL, INCIDENTAL, PUNITIVE, COVER OR CONSEQUENTIAL DAMAGES (INCLUDING, BUT NOT LIMITED TO, DAMAGES FOR THE INABILITY TO USE EQUIPMENT OR ACCESS DATA, DAMAGES TO HARDWARE, LOSS OF BUSINESS, LOSS OF PROFITS, BUSINESS INTERRUPTION OR THE LIKE), ARISING OUT OF THE USE OF, OR INABILITY TO USE, THE SOFTWARE AND BASED ON ANY THEORY OF LIABILITY INCLUDING BREACH OF CONTRACT, BREACH OF WARRANTY, TORT (INCLUDING NEGLIGENCE), PRODUCT LIABILITY OR OTHERWISE, EVEN IF SEARCHTRUTH OR ITS REPRESENTATIVES HAVE BEEN ADVISED OF THE POSSIBILITY OF SUCH DAMAGES AND EVEN IF A REMEDY SET FORTH HEREIN IS FOUND TO HAVE FAILED OF ITS ESSENTIAL PURPOSE.

SEARCHTRUTH'S TOTAL LIABILITY TO YOU FOR ACTUAL DAMAGES FOR ANY CAUSE WHATSOEVER WILL BE LIMITED TO THE GREATER OF \$2 OR THE AMOUNT PAID BY YOU FOR THE SOFTWARE THAT CAUSED SUCH DAMAGE.

THE FOREGOING LIMITATIONS ON LIABILITY ARE INTENDED TO APPLY TO ALL ASPECTS OF THIS EULA.

Basis of Bargain

The Warranty Disclaimer and Limited Liability set forth above are fundamental elements of the basis of the agreement between SearchTruth and you. SearchTruth would not be able to provide the Software on an economic basis without such limitations. Such Warranty Disclaimer and Limited Liability inure to the benefit of SearchTruth's licensors.

The limitations or exclusions of warranties and liability contained in this EULA do not affect or prejudice the statutory rights of a consumer, i.e., a person acquiring goods otherwise than in the course of a business.

The limitations or exclusions of warranties, remedies or liability contained in this EULA shall apply to you only to the extent such limitations or exclusions are permitted under the laws of the jurisdiction where you are located.

General

This EULA shall be governed by the internal laws of the State of ACT, Australia, without giving effect to principles of conflict of laws. You hereby consent to the exclusive jurisdiction and venue of the state courts sitting in Canberra, ACT or the federal courts in the NSW to resolve any disputes arising under this EULA. In each case this EULA shall be construed and enforced without regard to the United Nations Convention on the International Sale of Goods.

This EULA contains the complete agreement between the parties with respect to the subject matter hereof, and supersedes all prior or contemporaneous agreements or understandings, whether oral or written. You agree that any varying or additional terms contained in any purchase order or other written notification or document issued by you in relation to the Software licensed hereunder shall be of no effect. The failure or delay of SearchTruth to exercise any of its rights under this EULA or upon any breach of this EULA shall not be deemed a waiver of those rights or of the breach.

No SearchTruth dealer, agent or employee is authorized to make any amendment to this EULA.

If any provision of this EULA shall be held by a court of competent jurisdiction to be contrary to law, that provision will be enforced to the maximum extent permissible, and the remaining provisions of this EULA will remain in full force and effect.

All questions concerning this EULA shall be directed to: truth@searchtruth.com

QuranReader and other trademarks contained in the Software are trademarks or registered trademarks of SearchTruth.

INTRODUCTION

Read and Search the Holy Quran's English translation.

Read and Search the translation of Holy Quran in English for Java-enabled phones. Quran Reader Pro is highly optimized for slower mobiles or mobiles with less memory. It is available in the following four flavors:

Translation by M.Mohsin Khan

Translation by Pickthal

Translation by Shakir

Translation by Yusuf Ali

Quran Reader Pro has a fast scrolling display and a full index of all the Surahs (chapters) of the Holy Quran. It has the following distinctive features:

Full support for touch-screen devices with input methods such as Mouse or Stylus (not available in all mobiles)

Search facility, with complete flexibility, for searching any word or substring in the Holy Quran or in a specific chapter – includes user friendly features such as Verse previewing on the result page and Verse highlighting

The saving and retrieving of 5 bookmarks, each with a description of the chapter and ayah where the bookmark was placed

Zoom-in and Zoom-out feature for people who prefer larger/smaller text (may not be supported by some mobiles)

Complete control over chapter loading and canceling – free from freeze-ups (important for slow mobiles)

Selected Tafsirs (Interpretation) of the Holy Quran from “Tafsir Ibn Katheer”

Jumping to a particular chapter or a verse inside of a surah (chapter).

Quran Reader Pro has significant advantages over Quran Reader Basic and is far superior in memory consumption and functionality. For more details on the differences between the two, please goto **www.searchtruth.com**.

INSTALLATION GUIDE

Please read the following very carefully.

The Quran Reader for Mobiles application can **only be installed on Mobiles**.

In order to install Quran Reader Pro, you need to ensure that your mobile meets the following requirements:

A Java-enabled Phone that supports:

MIDP 1.0/2.0
JAR (Java Archive) files of size 520KB
270KB of FREE RAM
Screen width of 128 pixels or more

Please be informed that we have not tested this application on all phones and models and so you will need to consult your mobile's user manual for further details. However, we have provided a list of mobiles that may support Quran Reader Pro (judging them based on the above criteria). This list has been attached to the end of the document.

You need to follow the following five simple steps in order to install the software:

- 1. Ensure you have a Data-Cable or Bluetooth or Infra-red (along with its software) for transferring the file from your PC to your Mobile**
- 2. Choose the right CLDC version**
- 3. Select the translation you want from the selected CLDC directory (i.e. CLDC10 or CLDC11)**
- 4. Transfer the .jar file from the Translation directory from your PC to your Mobile (e.g. transfer CLDC10\QuranReader Pro Moshin\QuranReaderProMoshin.jar to your mobile)**
- 5. Open the transferred file from your mobile to begin installation**

STEP 1 - Before you Begin

Important! Please Read the following carefully:

In order to be confident that your mobile will be able to run Quran Reader Pro, we would encourage you to download Quran Reader Basic before you decide to purchase this software. If Quran Reader Basic works, you may then proceed to buying Quran Reader Pro.

Note that you will need WinZip (www.winzip.com) or WinRar (www.rarlab.com) to uncompress the Zipped file (QuranReaderPro.zip). Please download and install one of the two in order to unzip the file and then follow the following instructions.

After ensuring that your mobile meets the above requirements please take a minute to see whether you have the following tools:

A USB DataCable that attaches your Mobile to your PC, along with its software

OR

If you have a Bluetooth enabled Phone, a Bluetooth adapter attached to your PC

You must have some medium for transferring the file from your PC to your Mobile. This is usually provided to you when you buy your phone. However, older models may not come with a DataCable and you may need to buy one separately. If your mobile is Bluetooth enabled and you have some Bluetooth hardware attached to your PC (e.g. Bluetooth adapter) you may use that for transferring the file across.

In order to use your **Data-Cable**, you'll need to appropriate software that came with it to transfer the file across. An example is of a Pocket PC device. It comes with a USB "cradle" that plugs into your computer. Place your device on the cradle and if the appropriate drivers are installed, windows will show a "Mobile Device" drive under "My Computer". Another example is that of Nokia 9300. It comes with a cradle as well as a Data-Cable. If the appropriate Nokia Suite software has been installed, plugging in the mobile launches the Suite which provides you with the facility of installing programs and transferring files seamlessly.

In order to use **Bluetooth**, ensure that your mobile is under "**Discoverable**" mode and that it has been paired with your computer (see the Bluetooth manual for further details). Once the device has been paired, a file transferring software that came with the Bluetooth hardware should be able to copy the QuranReader file across to your mobile. Most phones have the Bluetooth option under "Settings->Connections->Bluetooth"

STEP 2 - Choosing the right CLDC version

Please refer to Appendix A and see which CLDC version your mobile supports. If your mobile is not listed in the list, then it could be that your mobile does not support Java Applications at all, or will not be able to run Quran Reader.

Once you have decided the CLDC to use, please open the respective directory from the unzipped file with the corresponding version. E.g CLDC10 for CLDC 1.0, and CLDC11 for CLDC1.1.

STEP 3 – Selecting the Translation to be installed

The CLDCX (where X is 1.0 or 1.1) directory holds four translations, each in different directories. These are stand-alone programs and you can choose to install either one of them or all of them, depending upon the amount of memory and space your mobile has.

The CLDC directory will list the following directories further:

QuranReader Pro Mohsin

QuranReader Pro Pickthal

QuranReader Pro Shakir

QuranReader Pro YusufAli

Select any translation that you prefer and browse into that directory.

STEP 4 – Transfer the file to your Mobile

As described in STEP 1, you'll need to now simply transfer the .jar file (e.g. QuranReaderProMohsin.jar) to your mobile. Remember the location of where you transferred the file. In case the location cannot be determined, as on some phones, you'll need to look for the file in all directories in your mobile. Possible locations could be the "Games" or the "Apps" directory, or the "Message Inbox" directory. On some phones it could also be "My Documents" or "My Files".

STEP 5 – Open the file from your Mobile

After you have located the file, open it from your mobile. If your mobile supports QuranReader and .jar files larger than 500KB, then it will automatically launch the installer. If it complains of an "unknown format" or "application error" or "file not recognized", then it could be that your Mobile does not support large .jar files. Please remember that the information provided in Appendix A is based on the specs and most of the phones listed have not been tested with. Appendix A is only to be used as a reference and does not intend by any means that all the phones listed will run Quran Reader. It could be that your phone has a lot of memory initially and may support Quran Reader but does not have enough space left because of other installed applications.

If you have any problems at this step, please first read the FAQs and make sure your phone does meet the space and memory requirements and is listed in APPENDIX A.

If you think your phone meets the demands then please goto <http://www.searchtruth.com/contactus.php> and write to us with details regarding your mobile model and the steps you took to produce the error that you see on the screen.

Installing the Arabic Version

In order to install **Quran Reader Pro Arabic** or **Quran Reader Basic Arabic** you need to make sure that your mobile meets the following demands:

A Java-enabled Phone that supports:

MIDP 2.0
JAR (Java Archive) files of size 850KB
270KB of FREE RAM
Screen width of 128 pixels or more

If your mobile does not meet the above demands, you will not be able to use Quran Reder Pro/Basic Arabic.

To install the Arabic version, please follow **steps 1 to 5** described in the previous section. The installation procedure should be exactly the same.

USING QURAN READER PRO

For the purpose of illustration, we have used Nokia 7710 to give the readers some idea of what the program should look like. The overall functionality should be the same on all mobiles.

Starting to use Quran Reader Pro

The first thing you'll see when Quran Reader Pro starts is the following screen.

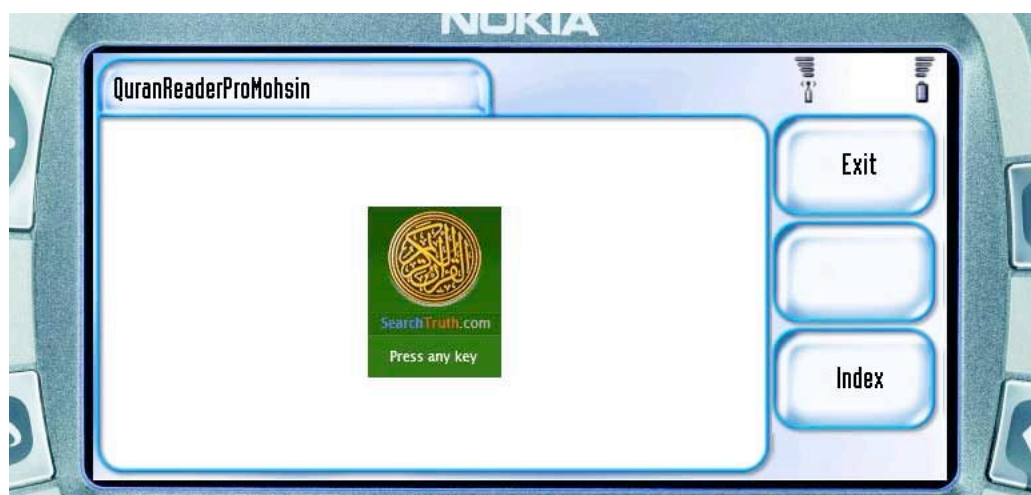


Fig 1

This is only a splash screen. In order to move onto the main index of chapters, please either press the **Index** button or any key on your mobile (you could also tap with your stylus if you have a touchscreen).

Main Chapter List (Index)

The index comprises of 114 chapters, divided into pages where a page's length depends on the height of the screen. You could end up with a single column or two columns. This will happen automatically based on the width of your mobile's screen. So if you don't see an exact replica of the following, be assured that the screen has been 'trimmed' for your mobile to fit in a single column.



Fig 2

In order to select a surah, you are presented with a small ‘selector’ arrow on the left hand side of the surah number. The numbers show the actual surah number followed by the Arabic name of the Surah. Press the Up, Down, Left and Right keys to move the arrow to the Surah you want to view.

Once you are happy with your selection, press the **Center key** to select the surah. On most mobiles you might not find a center key. In this situation, either press the Enter key or the digit 5. On smaller mobiles, digit 2 is for UP, 8 is for DOWN, 4 is for LEFT, 6 is for RIGHT and 5 is for CENTER or ACTION.

Going to the Start or End of the Index quickly

Rather than pressing the arrow keys to move the selector around, you can quickly navigate to the start of the index or the end of the index. This can be done by using the “**Goto Start**” item in the Menu or the “**Goto End**” item in the menu. The following figures illustrate this point:

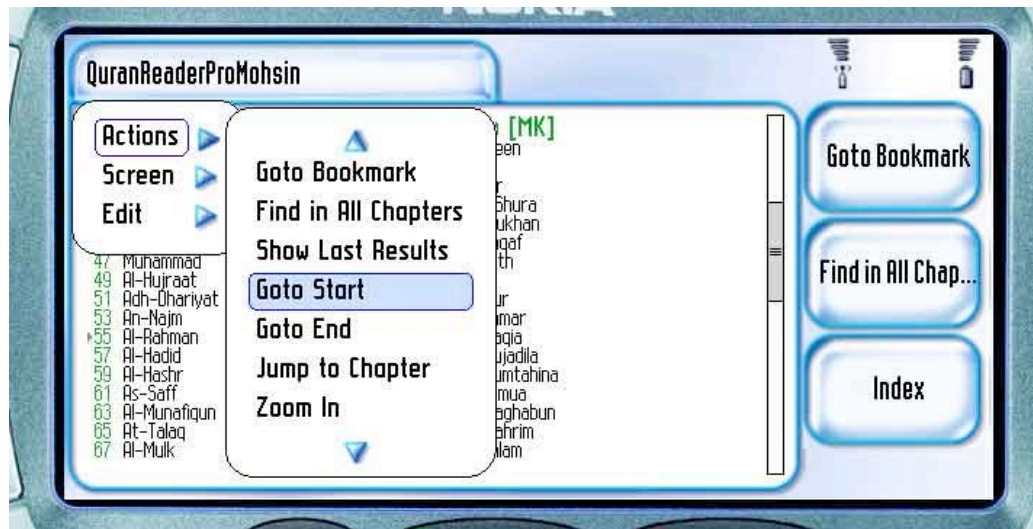


Fig3. Select “Goto Start” from the Menu from any where on the Index page

This will take you to the start of the index: as shown below:



Fig 4

Similarly, you may go to the end of the Index by selecting “**Goto End**” from the Menu:

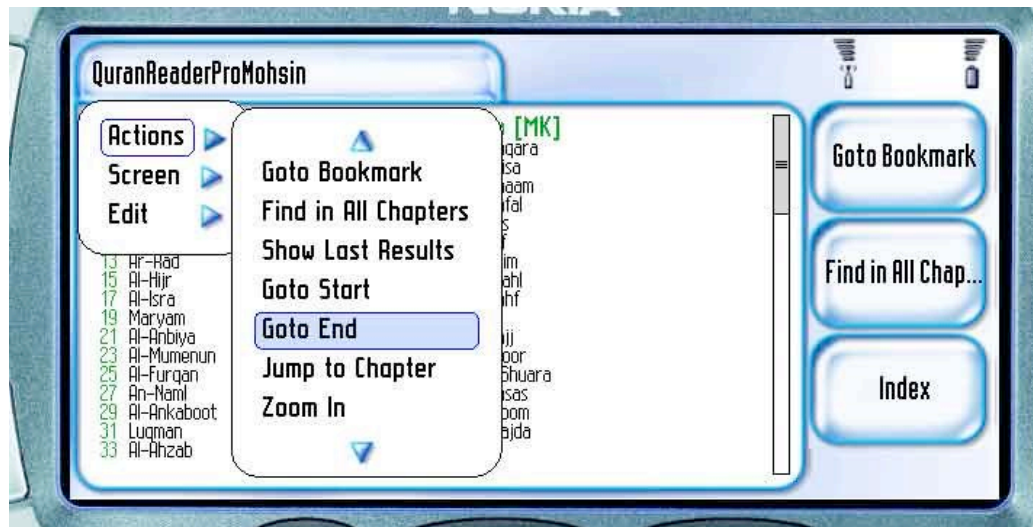


Fig 5. Goto end of the index

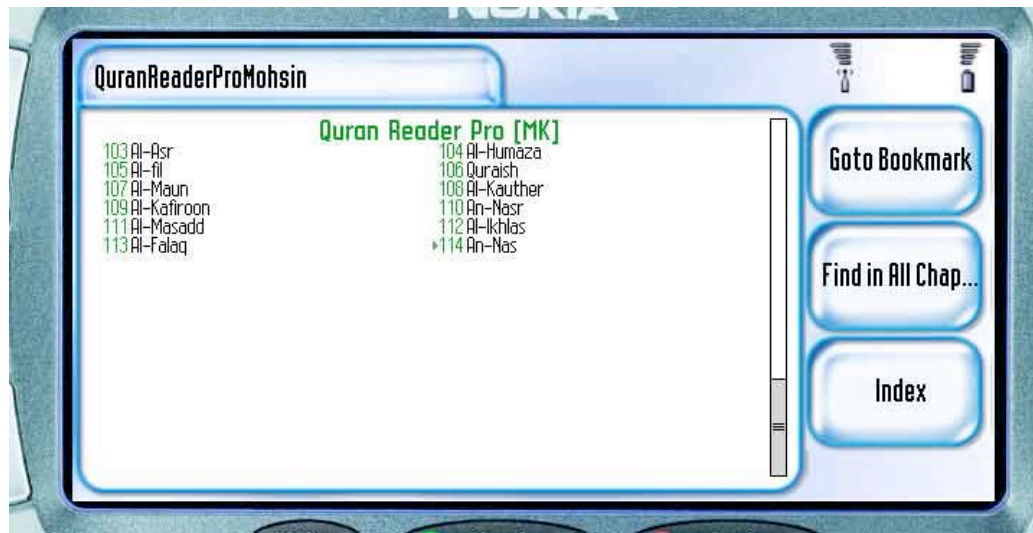


Fig 6. End of index

Loading a Surah

In case you have a slow mobile, it might take a few seconds for the Surah to load up. Once it has loaded, you will be able to navigate very quickly. While the Surah is being loaded, you will be presented with a **Loading screen**:

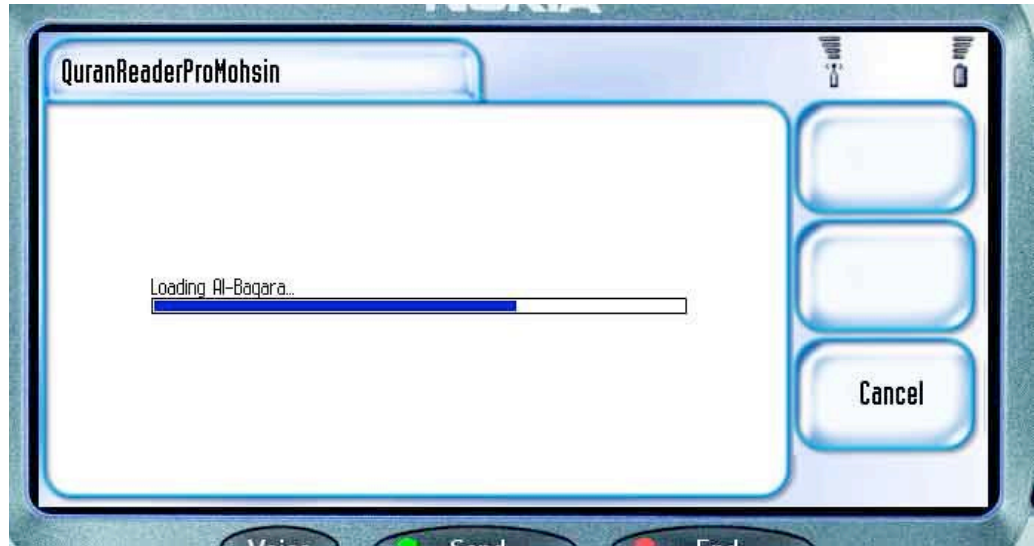


Fig 7. Loading Surah al-Baqarah..

In case you made an incorrect selection of Surah or in case you want to cancel the loading process, you can interrupt it at any time by pressing the CANCEL button. Most mobiles will have this automatically assigned to one of the shortcut buttons. In case you cannot see the Cancel button, you can press “Menu” and select Cancel from there. This will take you back to the main Index page.

After the loading process has completed, you'll be presented with the first page of the surah:

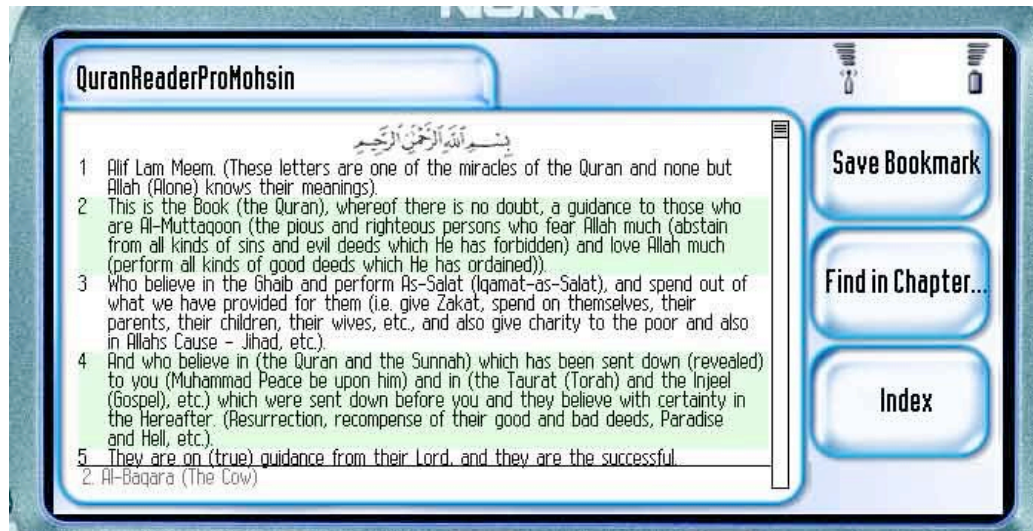


Fig 8. Loaded Chapter

Saving a Bookmark

When inside a Surah, and only when inside a surah, you will notice that in the Menu there is an additional option called **“Save Bookmark”**. This feature allows you to save 5 bookmarks of your favorite Surahs and Ayahs.

Let's say you're reading Surah Al-Rahman and you're on verse 50. You can set a bookmark on the page (which automatically links back to the first Ayah on the page) by selecting the **“Save Bookmark”** option in the menu:

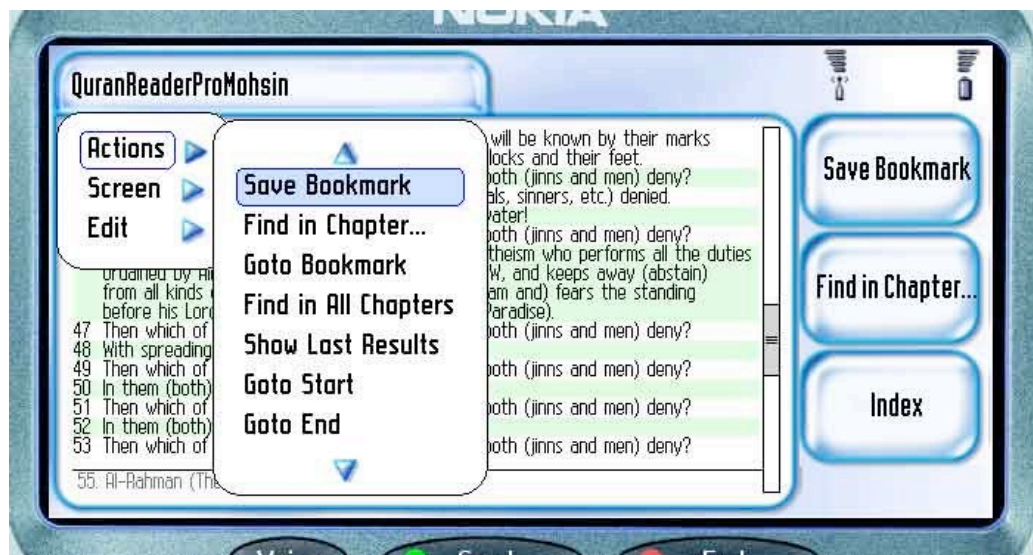


Fig 8. Selecting to save a bookmark

This will give you a list of 5 slots. In case you're setting the bookmark for the first time, all slots will be empty and you may select any slot. However, in case you have already set 5 bookmarks, you'll have to overwrite a bookmark on one of the slots.

Simply use your stylus or the navigation keys to select a slot and click "Select":

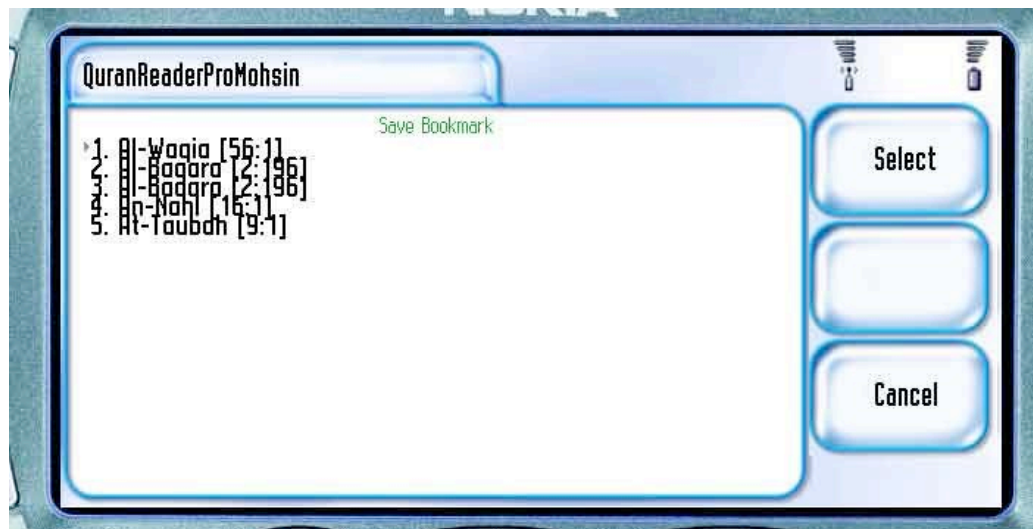


Fig 10. List of already saved bookmarks. This will contain "<empty>" items in case there are no bookmarks

Upon selecting a slot that is not empty, you will be shown with a confirmation dialogue:

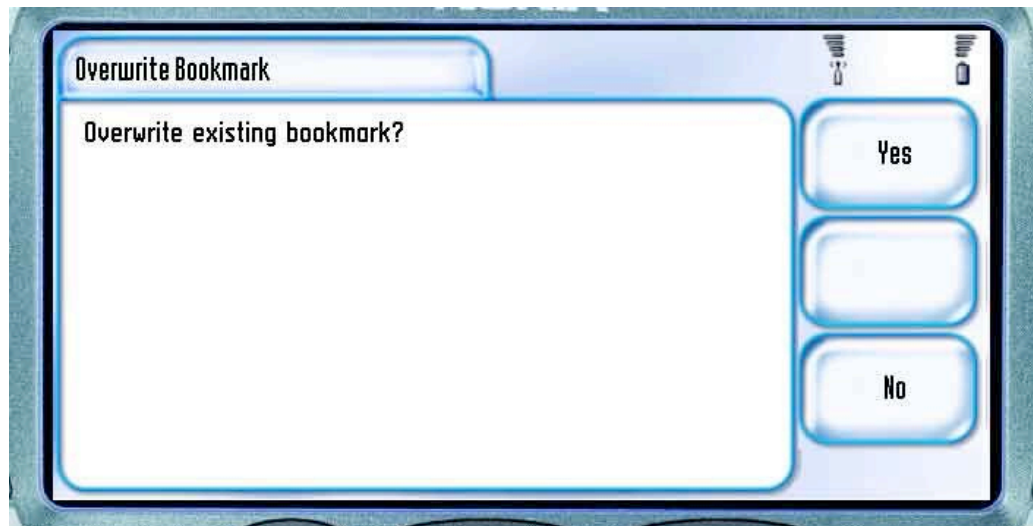


Fig 11. Confirmation of overwriting an existing bookmark

You may then choose to overwrite and delete the previously saved bookmark in the slot or click “**NO**” to go back to the selection screen. You will eventually have to overwrite a bookmark as only 5 bookmarks are currently supported.

Loading a saved Bookmark

You can load a previously bookmark from any point in the program (i.e. from the index or from inside a chapter). Select “**Goto Bookmark**” from the Menu:

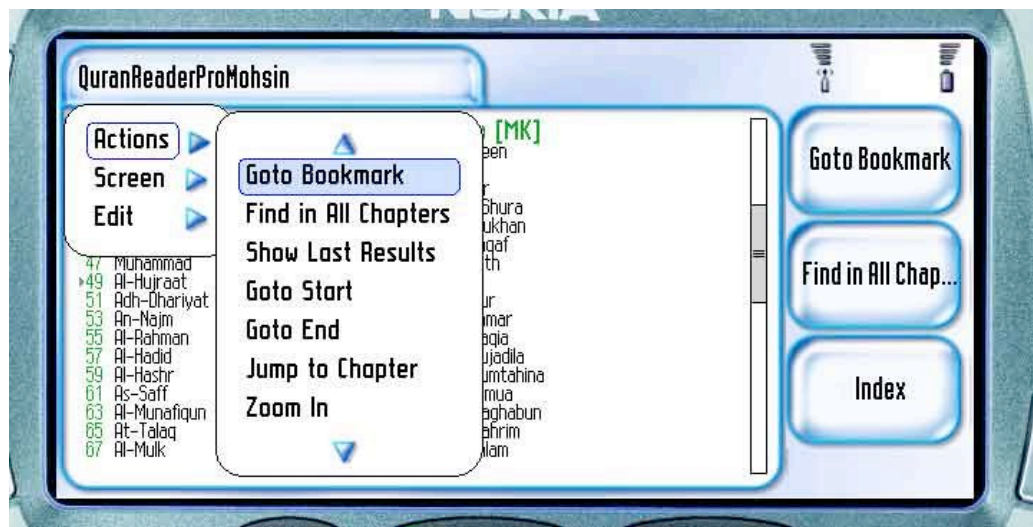


Fig 12. Loading a bookmark

This will give you a similar list as that of the Save Bookmark screen in figure 10. Selecting a saved bookmark will take you to the particular surah and ayah.

Going to the Start or End of the Chapter quickly

Rather than pressing the arrow keys to move the selector around, you can quickly navigate to the start of the index or the end of the chapter. This can be done by using the “Goto Start” or “Goto End” item from the Menu:

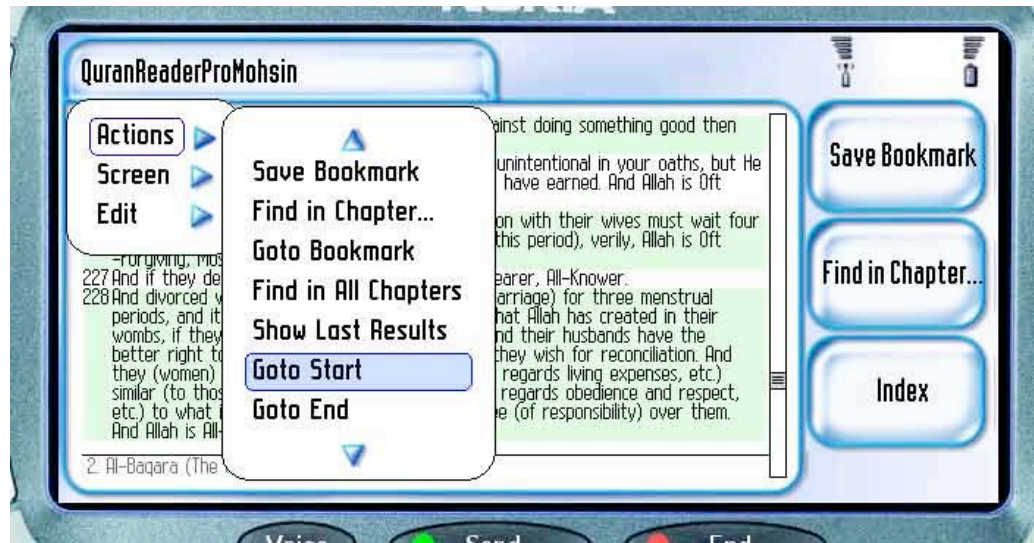


Fig 12. Goto start of chapter

Jumping to a particular verse

By selecting “Goto Verse” from the menu when inside an opened Surah (chapter), you can jump to a particular verse straightaway. Note that you’ll need to open a chapter before using this feature as it can only be available from within a chapter:

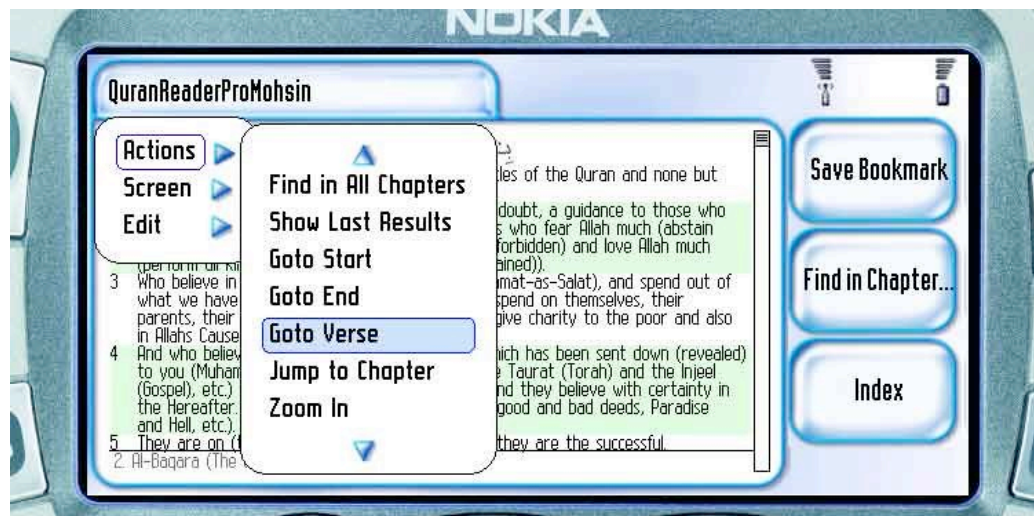


Fig 13. Goto Verse from inside an opened chapter

Enter the verse number:

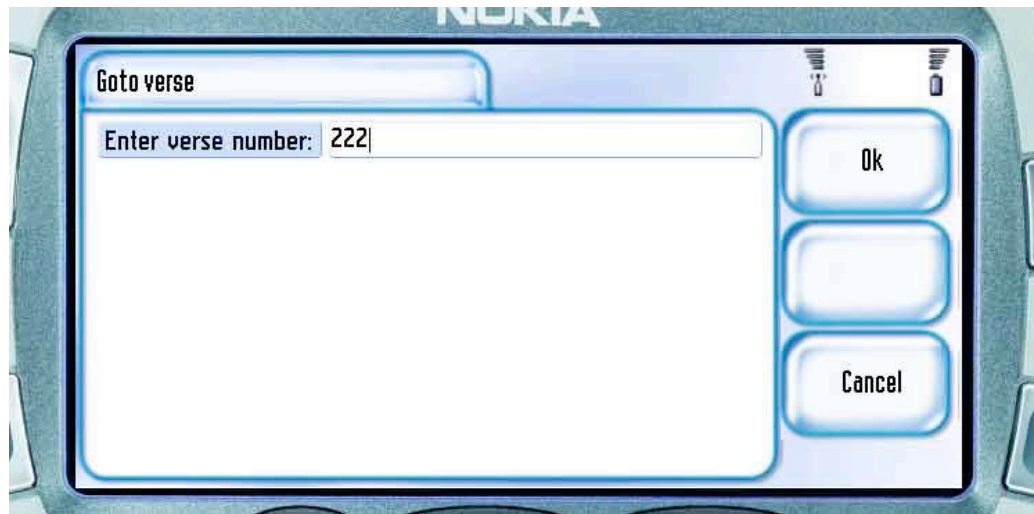


Fig 14. Enter verse number

This will jump to the corresponding verse:

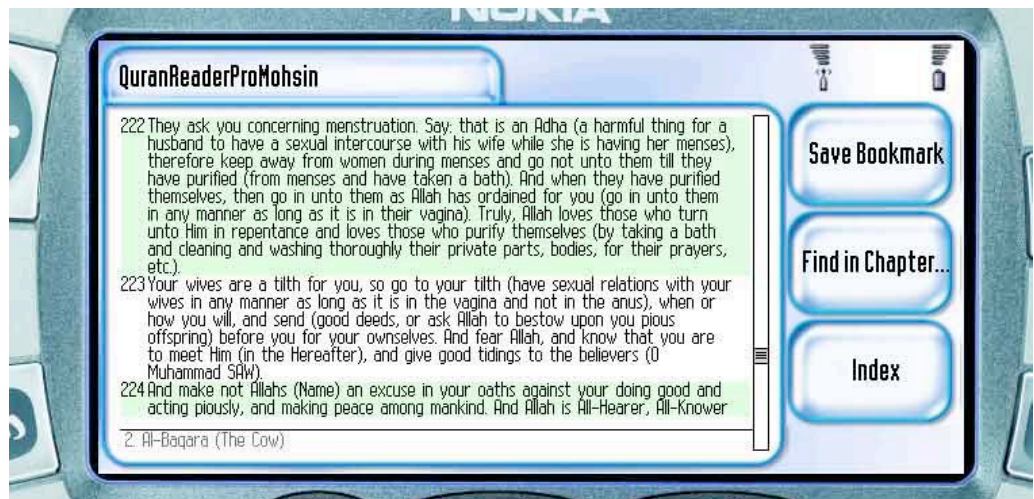


Fig 15.

Jumping to a particular chapter

A shortcut for opening a particular chapter from anywhere in the program is the “Jump to chapter” option in the main menu. The following diagrams illustrate the

procedure:

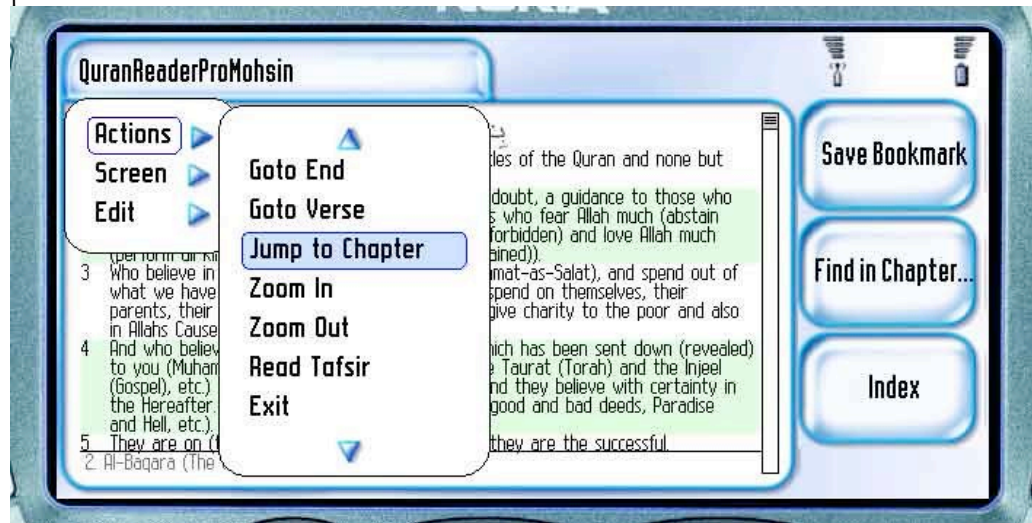


Fig 16. Jump to a particular chapter by selecting the “Jump to Chapter” option

This will give you the following dialog where chapter numbers between 1 and 114 are accepted as valid entries:



Fig 17. Enter chapter number

Entering chapter 96, for example, will open the corresponding Surah number for you:

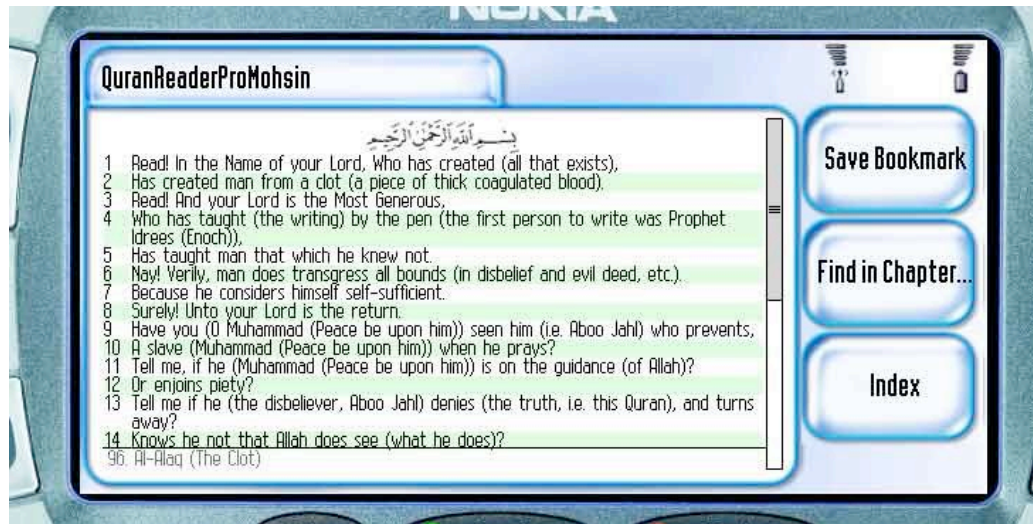


Fig 18. Opened chapter

Zooming-In and Zooming-Out

You may **zoom into** text in order to **enlarge** the font or **zoom-out** in order to **reduce** the size of the font. Note that some mobiles may not support enlarging or reducing the size of the font, so do not be disappointed if it doesn't work.

You may zoom-in or zoom-out from the main Index page and from inside the Chapter.

You can zoom the text to three levels. The default is the lowest level. Clicking zoom-in twice after that will take you from the smallest size to the medium and the largest. An illustration of the steps and their results has been shown below.

Zoom-In

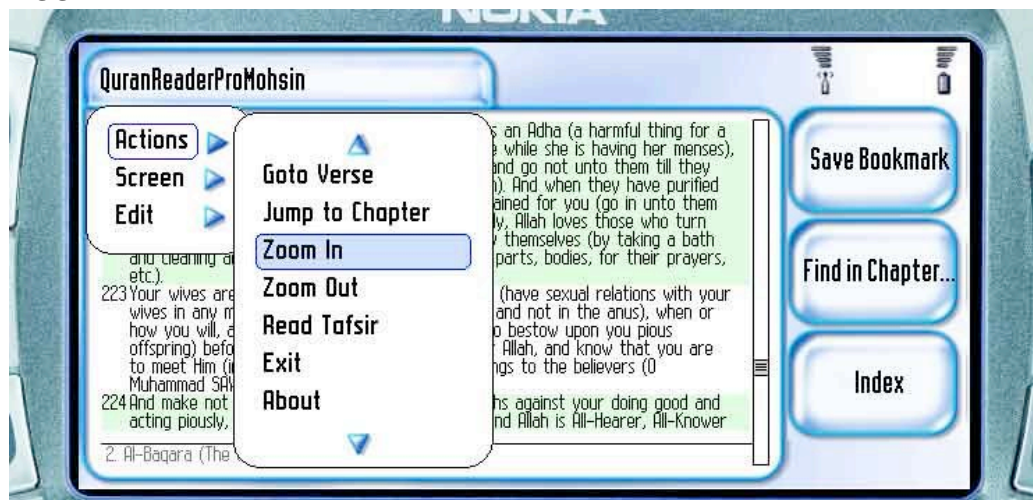


Fig19. Zoom-in text from small to Medium

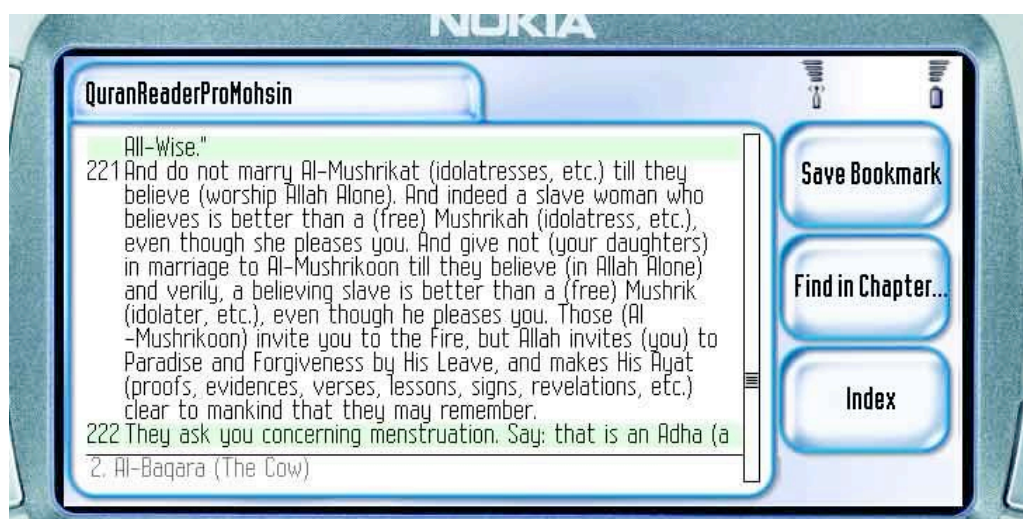


Fig 20. Zoom-in text from medium to large

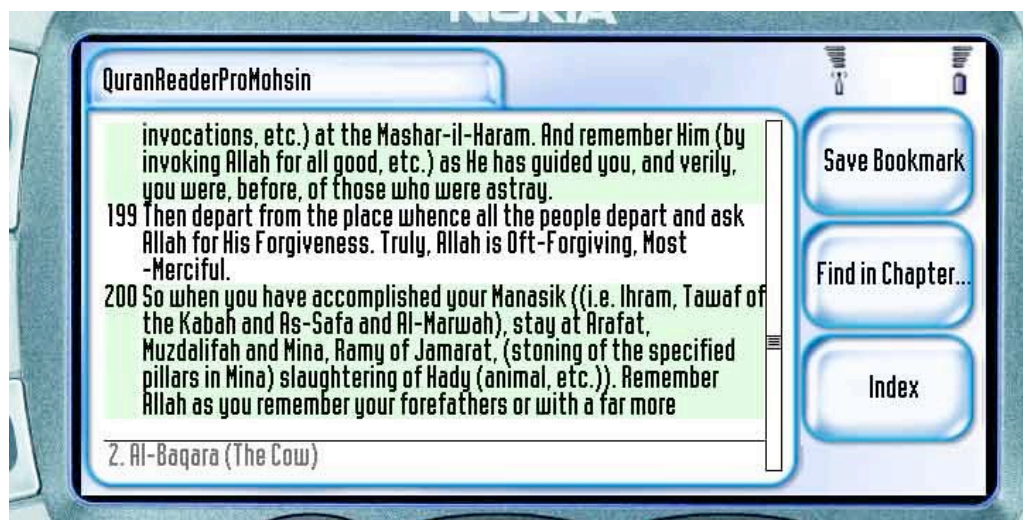


Fig 21. Maximum zoom level

Searching the whole of the Holy Quran

There are two levels of searches available. One that allows you to search for any word or sub-word in the whole of the Quran, and second that allows you to search for any word or sub-word inside of an opened chapter. There are some significant differences between the two. For example, you may search “page by page” in the Search for word in the Holy Quran whereas you may only get one page worth of results in the Search for word in current chapter feature.

In order to search for any word in all chapters of the Holy Quran, select “**Find in All Chapters**” from the main menu:

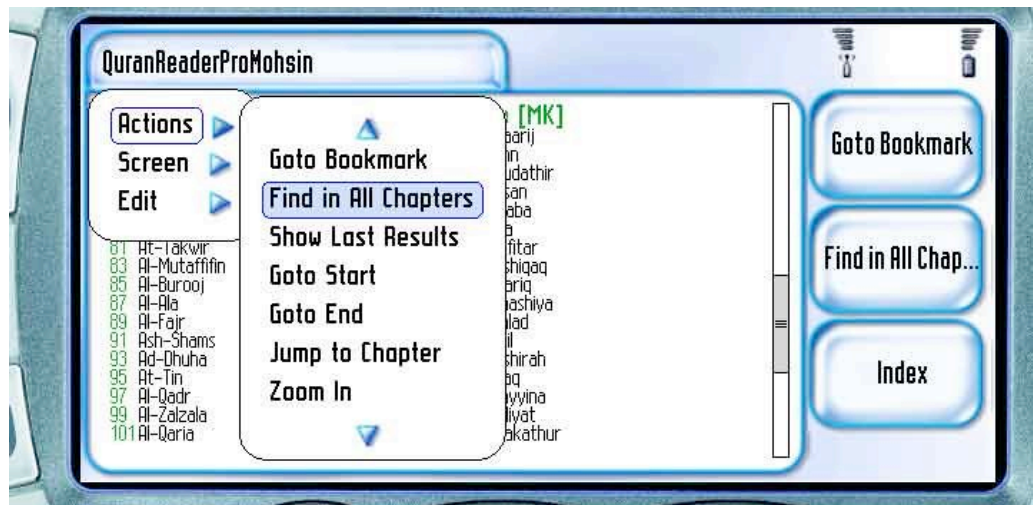


Fig 22. Fin in All chapters of the Holy Quran

The search word must be more than 3 characters long. For example, “the”, “all “, “hel”, are all valid inputs.

Since the search facility allows you to search for whole words and sub-words, you’ll have to construct the search accordingly. For example, if you are not sure of the spelling of “color” used in the translation, as it can also be “colour”, you can simply search for “colo”.

You should also understand that a search made on the word “all” will include words such as “tall”, “hall”, “shall”, “stalled” etc. If you simply want to search for the word “all”, you’ll need to place an empty space before the word “all” and after the word “all”. This will ensure that only the whole word “all” is searched.

An example has been shown below for a search made on the word “ all “.

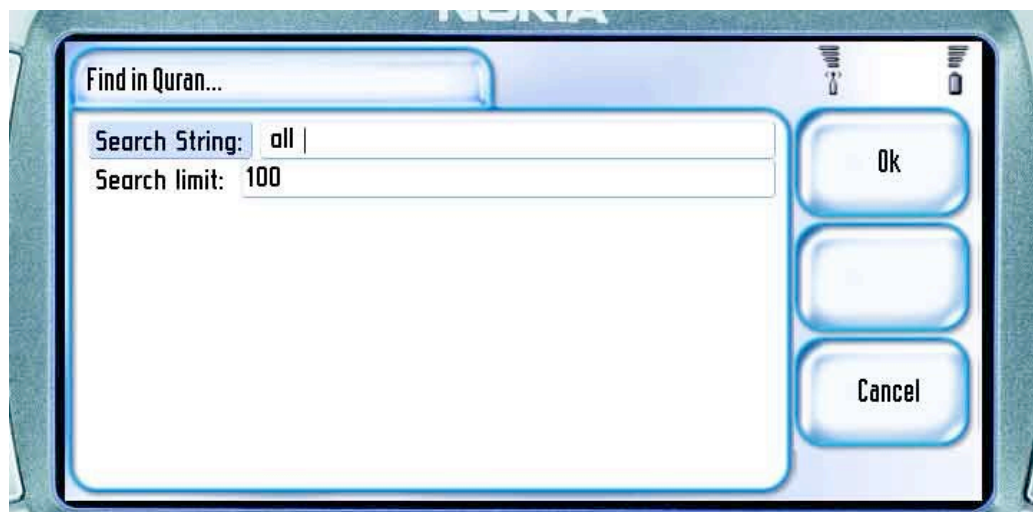


Fig 23. searching for “ all “

You can also select a search limit. The default is 10 and the maximum limit is 250. Please note that on slow phones the search will be slow as well and will be indicated by a progress bar. This search can be interrupted at any point by pressing the “**stop**” button on the “searching” screen. Stopping the search will show the results so far searched. On faster phones, searching will be very fast and should not take long. The search screen looks like the following:

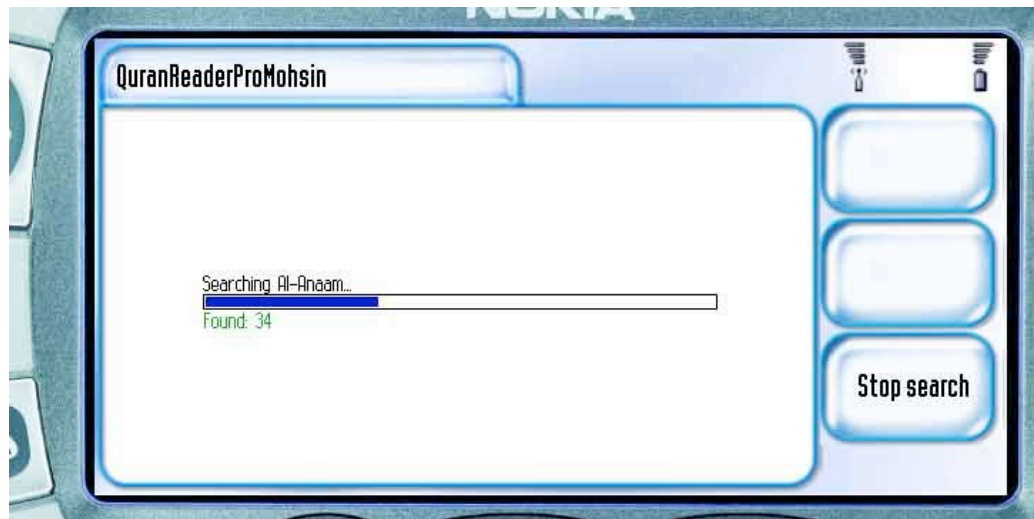


Fig 24. Search screen

This will result in the following (the cursor has been taken down to the last result):



Fig 25. Results for “ all “

Note that there is a green line of text at the bottom of the screen. This is the “**Preview**” of the selected verse, which is 5:103. **Verses Previewing** is off by default as most slow phones don’t display it quickly enough. This feature can be switched on by clicking the Menu button and selecting “**Preview On**”:

Switching Preview On

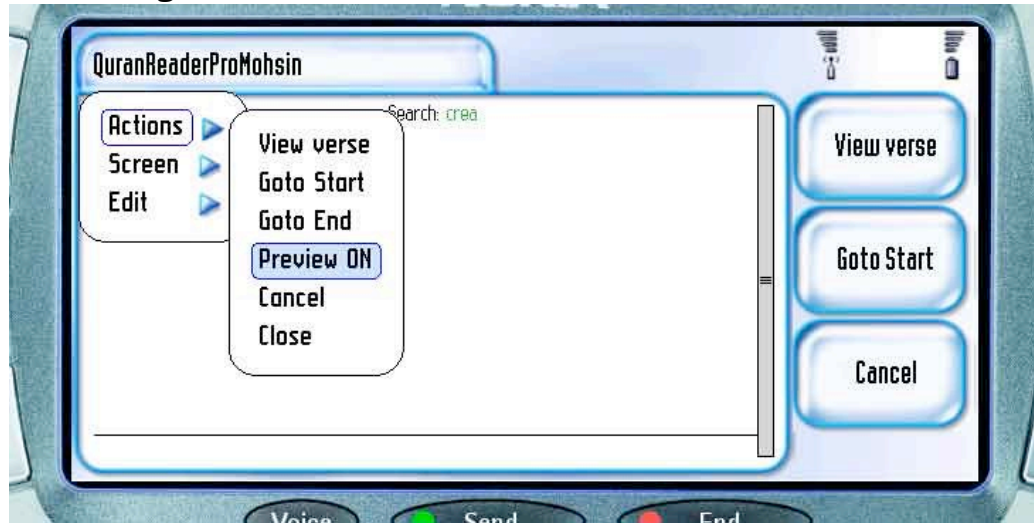


Fig 26. Switching Preview On

After the search has been performed, in case you searched for a very common word such as “all”, it might be that it’ll find 100 “all” in the first four or five chapters. In order to search the next 100 set, you can select “**Next 100 results**” from the menu and it will start searching from where it left off:

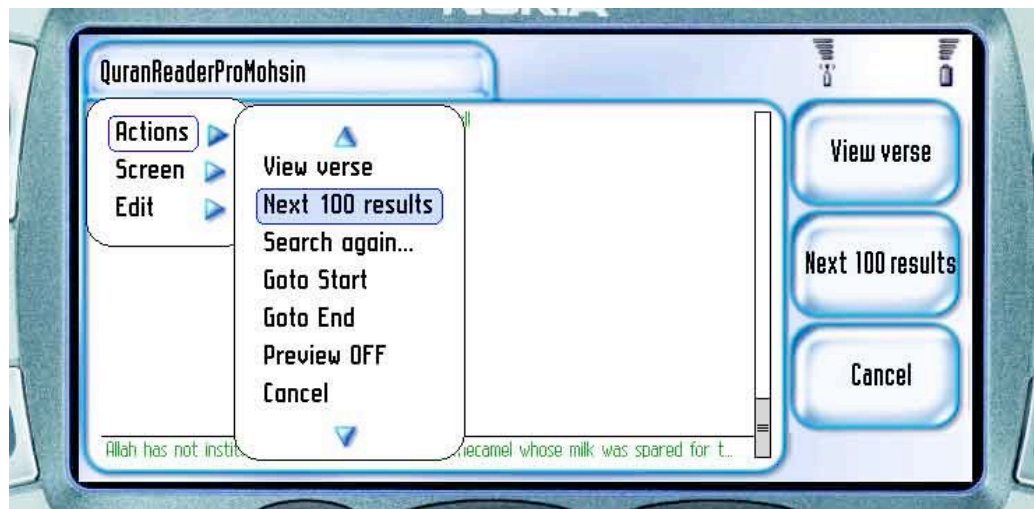


Fig 27. Search for the next 100 results

The next 100 results will be displayed as the following image shows. Note that the counting will start from where it left:

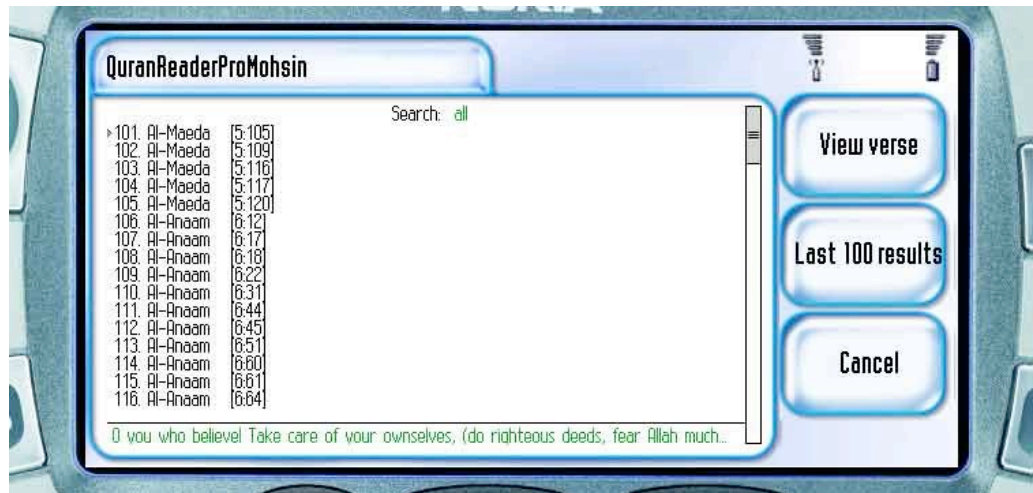


Fig 28. Next 100 results

In case you want to view the last page of results, you can select “**Last 100 results**” from the main menu. Note that you can only view the last page of the results and cannot go two pages back, for example

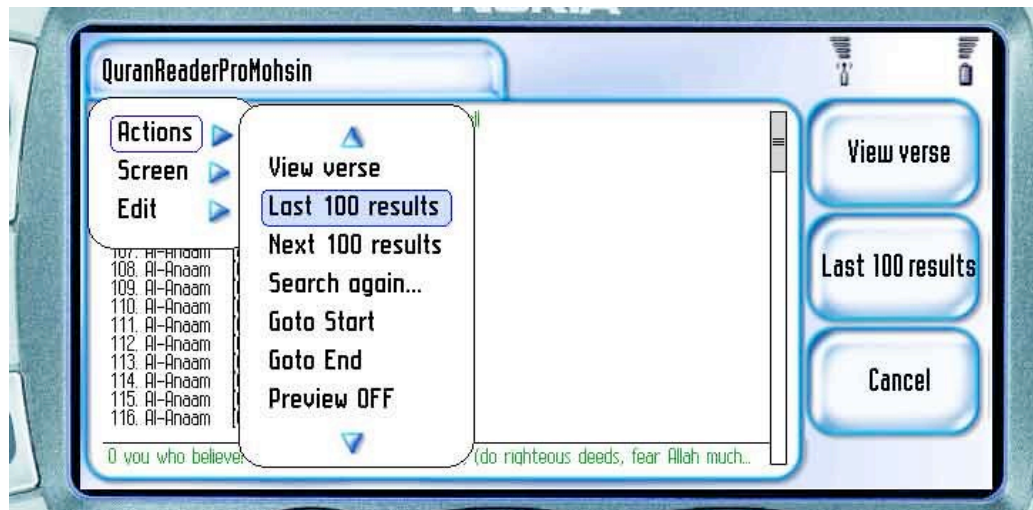


Fig 29. Selecting the last 100 results

Selecting the last 100 results will show you the last page of the results:

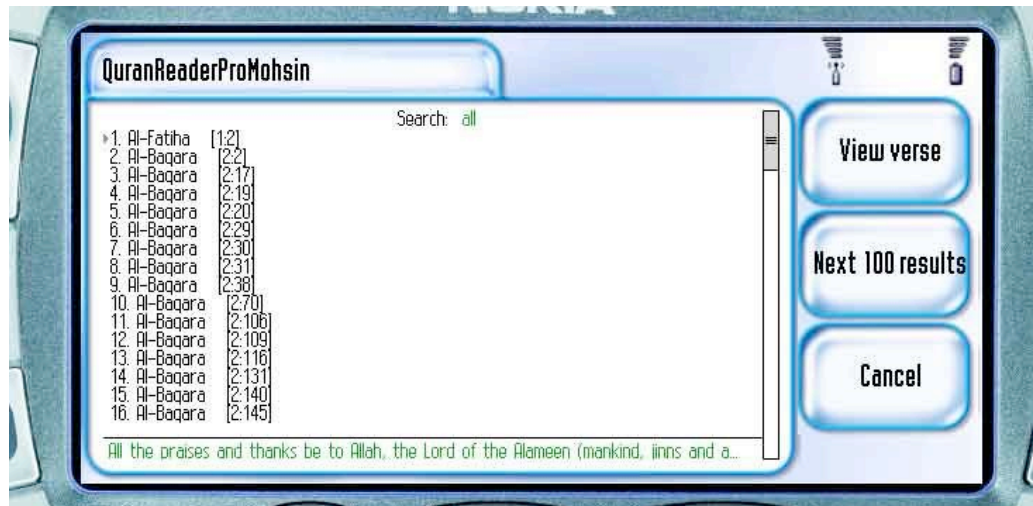


Fig 30. Last 100 results

Searching in a single chapter of the Holy Quran

The second level of search is searching in an opened chapter of the Holy Quran. This can be done by opening a chapter and then selecting “**Find in Chapter**” from the main menu. For more information about searching and how it should be performed, please refer to the last section on “Searching the whole of the Holy Quran”

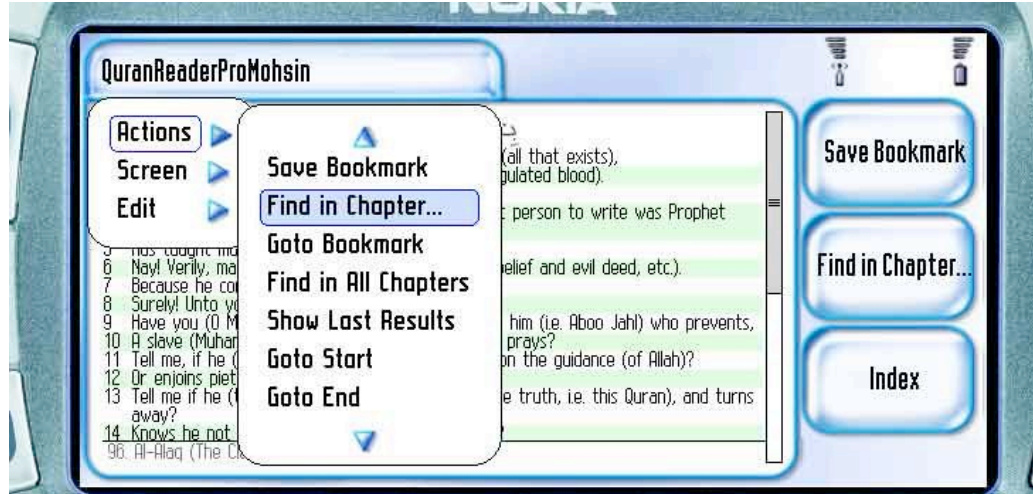


Fig 31. Searching in a single opened chapter of the Holy Quran

An example of searching for the word “crea”:

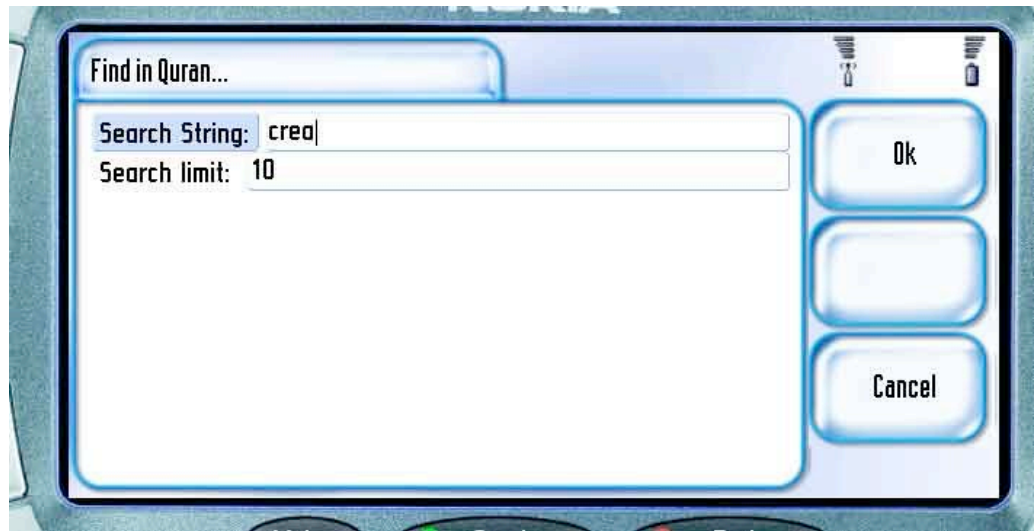


Fig 32. Search the Whole of Quran for the substring “Crea”

The following screen shows the results screen where the results will be shown:

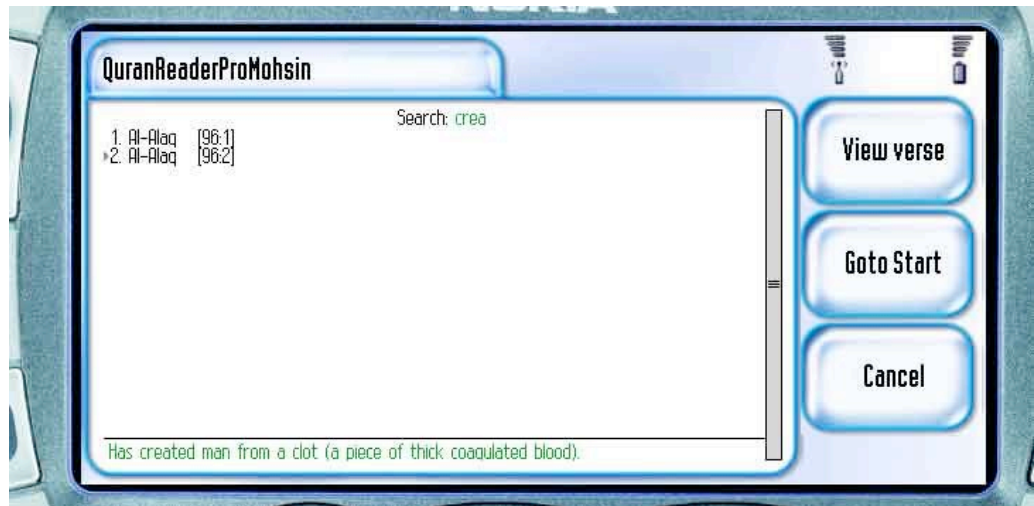


Fig 33. Search results

Selecting a verse will take you to the corresponding verse in the selected chapter. The selected verse will be highlighted “orange” on your screen in case you have a color screen:

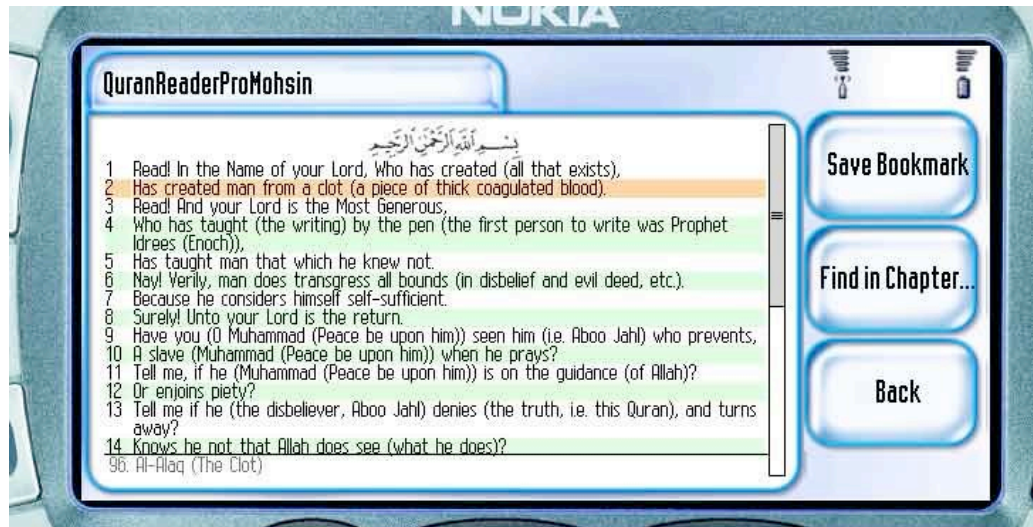


Fig 34. Highlighted selected verse

Showing last searched results

In order to show the last searched results, you may click on the “**Back**” button when coming from the search result screen, i.e. when you select a verse from the search result screen and it takes you to the surah and the selected ayah, or you may select the “**Show Last Results**” option from the main menu. This will show you the last results that you had performed:

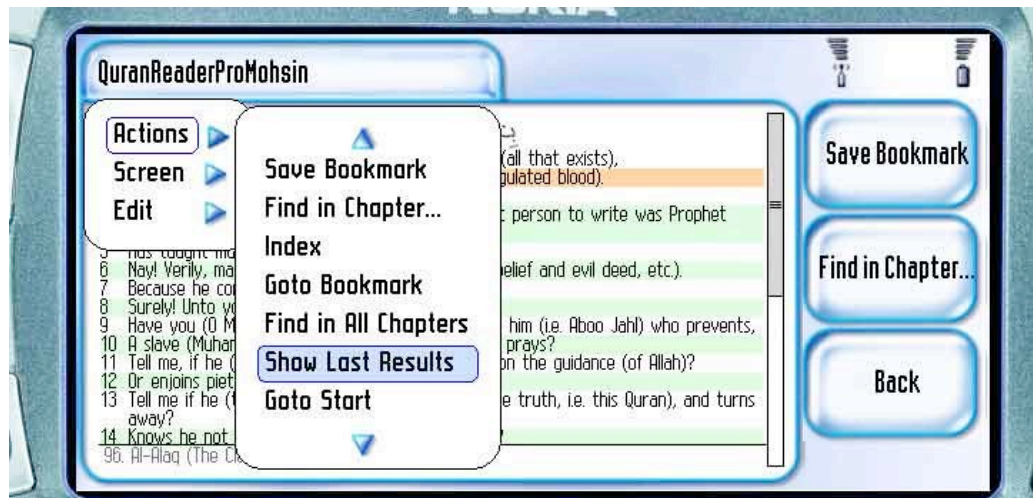


Fig 35. Showing last results

Reading Tafsir of the Holy Quran

QuranReader Pro has a short selection of important Tafsirs extracted mainly from the abridged English version of **Tafsir Ibn Katheer**. You may read the available tafsirs by selected “**Read Tafsir**” from the main menu.

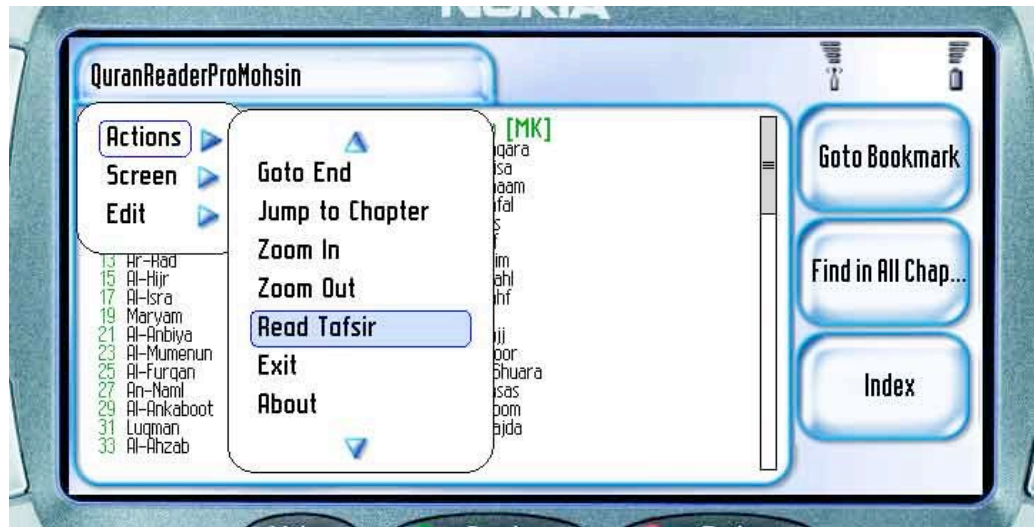


Fig 36. Read available tafsirs

This will take you to a screen presenting you with a list of available tafsirs.



Fig 37. Select a tafsir from the list

You may then use the UP and DOWN keys to move the cursor to the tafsir you want to read and then press the CENTER/ENTER/ACTION key to open the selected tafsir. For example:

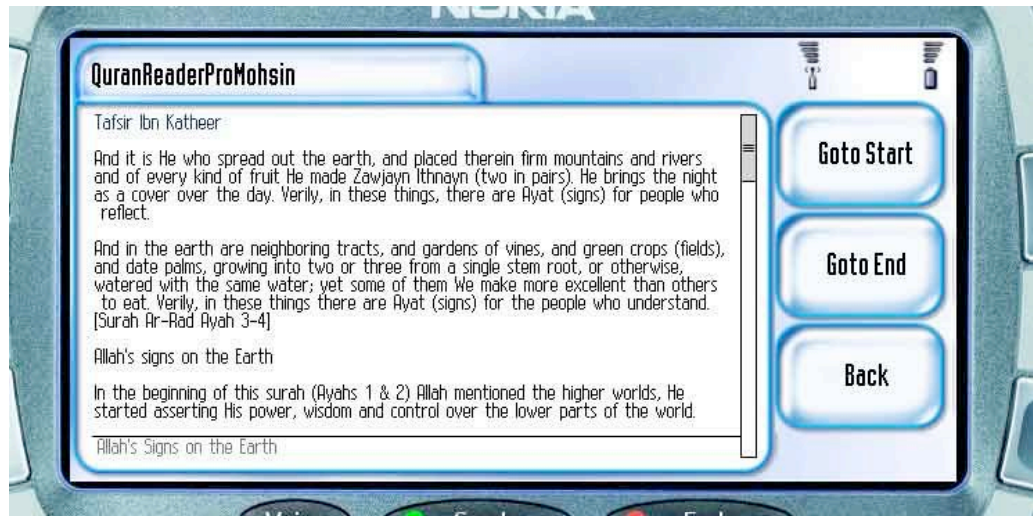


Fig 38. Reading a tafsir

In shaa Allah, we will be adding more tafsirs in the future to QuranReader Pro.

Changing Translation Settings (applicable to Arabic version only)

Apart from having all the above features, you may choose to view only Arabic or only English or Arabic along with its English translation on your mobile. In order to do so, select the “**Translations settings**” option from the Menu and **SELECT** one of the three options and then press **OK**. If the OK button is not visible on your shortcut buttons, please select OK from the Menu (as some phones hide the button in the Menu instead).

SUPPORTED MOBILES

Brand	Model	Profiles	Configuration	Screen resolution	Number of colors	S I (F)
BenQ	P30	MIDP-1.0	CLDC-1.0	208x320	65536 colors	122
HTC	Himilaya	MIDP-2.0	CLDC-1.0	240x320	65536 colors	131
Mio	8390	MIDP-2.0	CLDC-1.0	176x220	65536 colors	-
Motorola	A1000	MIDP-2.0	CLDC-1.0	208x320	65536 colors	163
Motorola	A760	MIDP-2.0	CLDC-1.0	240x320	65536 colors	102
Motorola	A780	MIDP-2.0	CLDC-1.0	240x320	65536 colors	204
Motorola	A920	MIDP-2.0	CLDC-1.0	208x320	65536 colors	819
Motorola	A925	MIDP-2.0	CLDC-1.0	208x320	65536 colors	819
Motorola	E680	MIDP-2.0	CLDC-1.0	240x320	65536 colors	204
Motorola	FOMA M1000	MIDP-2.0	CLDC-1.1	208x320	65536 colors	163
Motorola	MPx200	MIDP-2.0	CLDC-1.0	176x220	65536 colors	102
Motorola	MPx220	MIDP-2.0	CLDC-1.1	176x180	65536 colors	176
Motorola	V3i	MIDP-2.0	CLDC-1.1	176x220	65536 colors	-
Motorola	i730	MIDP-2.0	CLDC-1.0	130x130	65536 colors	117

Brand	Model	Profiles	Configuration	Screen resolution	Number of colors	Screen size (inches)
Nokia	3152	MIDP-2.0	CLDC-1.1	128x160	262144 colors	204
Nokia	3155	MIDP-2.0	CLDC-1.1	128x160	262144 colors	204
Nokia	3155i	MIDP-2.0	CLDC-1.1	128x160	262144 colors	204
Nokia	3230	MIDP-2.0	CLDC-1.0	176x208	65536 colors	757
Nokia	3600	MIDP-1.0	CLDC-1.0	176x208	4096 colors	-
Nokia	3620	MIDP-1.0	CLDC-1.0	176x208	65536 colors	-
Nokia	3650	MIDP-1.0	CLDC-1.0	176x208	4096 colors	-
Nokia	3660	MIDP-1.0	CLDC-1.0	176x208	65536 colors	-
Nokia	6152	MIDP-2.0	CLDC-1.1	128x160	262144	204
Nokia	6155	MIDP-2.0	CLDC-1.1	128x160	262144	204
Nokia	6155i	MIDP-2.0	CLDC-1.1	128x160	262144	204
Nokia	6230i	MIDP-2.0	CLDC-1.1	208x208	262144 colors	204
Nokia	6235	MIDP-2.0	CLDC-1.1	128x128	65536 colors	143
Nokia	6235i	MIDP-2.0	CLDC-1.1	128x128	65536 colors	143
Nokia	6260	MIDP-2.0	CLDC-1.0	176x208	65536 colors	286
Nokia	6265	MIDP-2.0	CLDC-1.1	240x320	262144 colors	204
Nokia	6265i	MIDP-2.0	CLDC-1.1	240x320	262144 colors	204
Nokia	6280	MIDP-2.0	CLDC-1.1	240x320	262144 colors	204

Brand	Model	Profiles	Configuration	Screen resolution	Number of colors	Screen size (inches)
Nokia	6600	MIDP-2.0	CLDC-1.0	176x208	65536 colors	307
Nokia	6611	MIDP-2.0	CLDC-1.1	128x160	262144	204
Nokia	6620	MIDP-2.0	CLDC-1.0	176x208	65536 colors	-
Nokia	6630	MIDP-2.0	CLDC-1.0	176x208	65536 colors	-
Nokia	6670	MIDP-2.0	CLDC-1.0	176x208	65536 colors	819
Nokia	6680	MIDP-2.0	CLDC-1.0	176x208	262144 colors	-
Nokia	6681	MIDP-2.0	CLDC-1.0	176x208	65536 colors	-
Nokia	6681	MIDP-2.0	CLDC-1.0	176x208	65536 colors	-
Nokia	6682DP2	MIDP-2.0	CLDC-1.0	176x208	262144 colors	-
Nokia	7610	MIDP-2.0	CLDC-1.0	176x208	65536 colors	819
Nokia	7650	MIDP-1.0	CLDC-1.0	176x208	4096 colors	-
Nokia	7700	MIDP-2.0	CLDC-1.0	640x320	65536 colors	-
Nokia	7710	MIDP-2.0	CLDC-1.0	640x320	65536 colors	-
Nokia	9300	MIDP-2.0	CLDC-1.1	640x200	65536 colors	204
Nokia	9500	MIDP-2.0	CLDC-1.0	640x200	65536 colors	204
Nokia	N-Gage	MIDP-1.0	CLDC-1.0	176x208	4096 colors	-
Nokia	N-Gage QD	MIDP-1.0	CLDC-1.0	176x208	4096 colors	163
Nokia	N70	MIDP-1.0	CLDC-1.0	176x208	262144 colors	-

Brand	Model	Profiles	Configuration	Screen resolution	Number of colors	S (F)
Nokia	N90	MIDP-2.0	CLDC-1.1	352x288	16777216 colors	163
Nokia	N90-1	MIDP-2.0	CLDC-1.1	352x288	16777216 colors	163
Nokia	N91	MIDP-2.0	CLDC-1.1	176x208	262144 colors	-
O2	XDAII/IIs/Mini	MIDP-2.0	CLDC-1.1	240x247	65536 colors	-
Orange	C500	MIDP-2.0	CLDC-1.1	176x180	65536 colors	424
Palm	TungstenC	MIDP-2.0	CLDC-1.0	300x300	65536 colors	424
Qtek	XDAII/IIs/Mini	MIDP-2.0	CLDC-1.1	240x320	65536 colors	64M
Samsung	SGH-D720	MIDP-2.0	CLDC-1.0	176x208	65536 colors	-
Samsung	SGH-D730	MIDP-2.0	CLDC-1.0	176x208	65536 colors	-
Samsung	SGH-Z140	MIDP-2.0	CLDC-1.1	176x189	65536 colors	204
Samsung	SGH-A700	MIDP-2.0	CLDC-1.1	176x185	65536 colors	204
Samsung	SGH-A880	MIDP-2.0	CLDC-1.1	176x185	65536 colors	204
Sanyo	MM-8300	MIDP-2.0	CLDC-1.1	176x180	65536 colors	204
Sanyo	S750	MIDP-2.0	CLDC-1.1	240x260	65536 colors	204
Sanyo	SCP-7400	MIDP-2.0	CLDC-1.1	240x261	65536 colors	320
Sanyo	MM-7400	MIDP-2.0	CLDC-1.1	176x180	65536 colors	204
Sanyo	MM 5600	MIDP-2.0	CLDC-1.1	240x261	65536 colors	320
Sendo	X	12MIDP-1.0	CLDC-1.0	176x220	65536 colors	122

Brand	Model	Profiles	Configuration	Screen resolution	Number of colors	S 1 (F
Siemens	SX1	MIDP-1.0	CLDC-1.0	176x220	65536 colors	-
Sony-Ericsson	D750	MIDP-2.0	CLDC-1.1	176x220	262144 colors	153
Sony-Ericsson	F500	MIDP-2.0	CLDC-1.1	128x160	65536 colors	153
Sony-Ericsson	F500i	MIDP-2.0	CLDC-1.1	128x160	65536 colors	153
Sony-Ericsson	J300	MIDP-2.0	CLDC-1.1	128x128	65536 colors	153
Sony-Ericsson	K300	MIDP-2.0	CLDC-1.1	128x128	65536 colors	153
Sony-Ericsson	K500	MIDP-2.0	CLDC-1.1	128x160	65536 colors	153
Sony-Ericsson	K500c	MIDP-2.0	CLDC-1.1	128x160	65536 colors	153
Sony-Ericsson	K500i	MIDP-2.0	CLDC-1.1	128x160	65536 colors	153
Sony-Ericsson	K600	MIDP-2.0	CLDC-1.1	176x220	262144 colors	153
Sony-Ericsson	K608	MIDP-2.0	CLDC-1.1	176x220	262144 colors	153
Sony-Ericsson	K700	MIDP-2.0	CLDC-1.1	176x220	65536 colors	153
Sony-Ericsson	K700c	MIDP-2.0	CLDC-1.1	176x220	65536 colors	153
Sony-Ericsson	K700i	MIDP-2.0	CLDC-1.1	176x220	65536 colors	153
Sony-Ericsson	K750	MIDP-2.0	CLDC-1.1	176x220	262144 colors	153
Sony-Ericsson	P800	MIDP-1.0	CLDC-1.0	208x320	4096 colors	819
Sony-Ericsson	P802	MIDP-1.0	CLDC-1.0	208x320	4096 colors	819
Sony-Ericsson	P900	MIDP-2.0	CLDC-1.0	208x320	65536 colors	163

Brand	Model	Profiles	Configuration	Screen resolution	Number of colors	S 1 (F
Sony-Ericsson	P908	MIDP-2.0	CLDC-1.0	208x320	65536 colors	163
Sony-Ericsson	P910	MIDP-2.0	CLDC-1.0	208x320	262144 colors	655
Sony-Ericsson	P910a	MIDP-2.0	CLDC-1.0	208x320	262144 colors	655
Sony-Ericsson	P910c	MIDP-2.0	CLDC-1.0	208x320	262144 colors	655
Sony-Ericsson	P910i	MIDP-2.0	CLDC-1.0	208x320	262144 colors	655
Sony-Ericsson	S700	MIDP-2.0	CLDC-1.1	176x220	262144 colors	153
Sony-Ericsson	S700c	MIDP-2.0	CLDC-1.1	176x220	262144 colors	153
Sony-Ericsson	S700i	MIDP-2.0	CLDC-1.1	176x220	262144 colors	153
Sony-Ericsson	V600	MIDP-2.0	CLDC-1.1	176x220	262144 colors	153
Sony-Ericsson	V800	MIDP-2.0	CLDC-1.1	176x220	262144 colors	153
Sony-Ericsson	V802	MIDP-2.0	CLDC-1.1	176x220	262144 colors	153
Sony-Ericsson	W550	MIDP-2.0	CLDC-1.1	176x220	262144 colors	153
Sony-Ericsson	W600	MIDP-2.0	CLDC-1.1	176x220	262144 colors	153
Sony-Ericsson	W800	MIDP-2.0	CLDC-1.1	176x220	262144 colors	153
Sony-Ericsson	W800i	MIDP-1.0/2.0	CLDC-1.1	176x176	65536 colors	-
Sony-Ericsson	Z1010	MIDP-2.0	CLDC-1.1	176x220	65536 colors	153
Sony-Ericsson	Z500	MIDP-2.0	CLDC-1.1	128x160	65536 colors	153
Sony-Ericsson	Z500a	MIDP-2.0	CLDC-1.1	128x160	65536 colors	153

Brand	Model	Profiles	Configuration	Screen resolution	Number of colors	S l (F
Sony-Ericsson	Z500i	MIDP-2.0	CLDC-1.1	128x160	65536 colors	153
Sony-Ericsson	Z520	MIDP-2.0	CLDC-1.1	128x160	65536 colors	153
Sony-Ericsson	Z800	MIDP-2.0	CLDC-1.1	176x220	65536 colors	153
T-Mobile	MDAII/MDAcompact	MIDP-2.0	CLDC-1.1	240x320	65536 colors	-
T-Mobile	SDA	MIDP-2.0	CLDC-1.0	176x208	65536 colors	-

FAQs (FREQUENTLY ASKED QUESTIONS)

Q. How do I know whether my mobile supports Java or not?

A. Please refer to APPENDIX A for a list of supported phones. If your phone is listed in the table, then your phone is Java-enabled. If it's not, you should consult your mobile's user manual or technical specs for more information. Note that the information provided in APPENDIX A is only to be used as a reference guide. You should try out Quran Reader Basic before buying Quran Reader Pro to make sure the software works on your mobile, as they both have the same set of requirements.

Q. How do I find out how wide my mobile's screen is?

A. Please refer to APPENDIX A. The screen sizes are listed there, amongst other technical details such as RAM/Memory size and storage size.

Q. What's MIDP 1.0/2.0, CLDC 1.0/1.1 anyway, and why do I have to care?

A. QuranReader works on MIDP 1.0/2.0 phones but may be dismissed as 'unsupported file format' (see below as well) if your device only accepts the CLDC 1.1 model (in case you're trying to install the CLDC 1.0 version) and vice versa. Theoretically this shouldn't happen but we have seen this happening.

CLDC stands for Connected Limited Device Configuration. The CLDC serves the market consisting of personal, mobile, connected information devices. This configuration includes some new classes designed specifically to fit the needs of small-footprint devices.

MIDP stands for Mobile Information Device Profile. These is a set of Java APIs that is generally implemented on the Connected Limited Device Configuration (CLDC). It provides a basic J2ME application runtime environment targeted at mobile information devices, such as mobile phones and two-way pagers. The MIDP specification addresses issues such as user interface, persistent storage, networking, and application model.

Q. I have successfully download the .zip file on my desktop, now what?

A. QuranReader for Java-enabled phones only works on mobiles/PDA devices that are Java-enabled. After ensuring that your mobile is supported, simply unzip the file and follow the listed in the Installation chapter of the User Guide.

Q. During installation, I am informed that the application is un-trusted. Should I continue?

A. Yes. This message simply appears because we have not obtained a Digital Certificate. Since the application has been originally compiled with the MIDP 1.0 library, MIDP 1.0 phones will not complain about this. However, MIDP 2.0 phones will complain about this but clicking "continue" will ignore the message. The application itself is otherwise completely safe to install. This message only appears because it doesn't recognize the 'security domain' of the application.

Q. When I transfer my file to the mobile, my computer says something similar to "The file being transferred might not be recognized by this device, do you want to continue?". What should I do?

A. Ignore the message and continue. This message appears for some PDAs like XDA IIs where MIDP is not part of the windows operating system but the mobile has a MIDP 2.0 add-on software. The file transferring protocol initially does not recognize ".jar" files and so it warns that the file may not be recognized. However, after it has been transferred, it can be run by browsing to the file and clicking on it. The MIDP 2.0 software will automatically pick it up.

Q. I am getting a "file format unsupported" message. I am sure I have previous installed .jar files and they worked. Why not the QuranReader?

A. This can happen for various reasons. First, it could be that your mobile does not support running or download a .jar file of size more than 60KB. Mostly older models have this limitation. You can verify by looking for your device in APPENDIX A of the User Guide.

Another reason could be that the configuration of the software (i.e. CLDC 1.0/1.10) is not recognized by the device, or that the device requires further information that is not present in the .jad file. We have seen this happening for Blackberry devices. If this is the case, please tell us about the problem, your mobile model and brand at: <http://www.searchtruth.com/contactus.php>

Q. My mobile is listed in the Supported Mobiles list and it's one of the latest mobiles but the program file is still too big for it to run and I can't seem to transfer the file successfully. Why is the program so large?

A. Please note that the Supported Devices list names devices that **may** support Quran Reader. We have not tested all of the devices and have merely listed them after making sure they meet the program's requirements. If the file is still too large for your mobile then it could be that you don't have enough space left in your mobile and that you have too many applications installed. Try cleaning up your mobile a bit and remove unwanted files and try again.

For this reason we recommend that you try Quran Reader Basic first before deciding to try out Quran Reader Pro in order to save your time and money and to be sure that your mobile supports it well.

Q. The application installed fine and I see a splash screen. Now what?

A. Press any key to continue and to be taken to the surah list.

Q. I am now on the surah/chapter list and clicking Goto Bookmark doesn't do anything, it keeps telling me that no bookmarks have been set. How do I goto a surah/chapter!?

A. Please press the center button of your mobile (or the click/selecting button, or the number 5) on a particular surah. You can navigate using the arrow keys or the 2, 8, 4, 6 keys on the number pad. 2 is for up, 8 is for down, 4 for left, 6 for right and 5 for selection.

The Goto Bookmark button you see is only a shortcut. There are other features available under the Menu (see by clicking menu).

Q. The software has no feature of selecting a particular verse. How do I do that?

A. There is. Click on the Menu button and select the "Goto verse" option. Please also read the User Guide for more information.

Q. How do I go back to the index from within a chapter?

A. You can either click the center button (or the 5 key) again or click on Index from the menu. Please also read the User Guide for more information.

Q. The software has the title QuranReader [MK]. What does this mean?

A. [MK] stands for Mohsin Khan. Similarly, [P] stands for Pickthal and [SH] stands for Shakir, while [YA] stands for Yusuf Ali. These are different short names given to the the respective translations. This is useful in distinguishing which version is which in case you have installed all the translations.

Q. My mobile does not support .jar files larger than 60KB but has more than 3MB of space. Can you do something about this?

A. Unfortunately no. The QuranReader's real size is due to the Quran's translation of all the surahs. The file cannot be split into two. However, on popular demand, we might break up the application into three or more portions as separate applications for mobiles that have a low limit of .jar file download.

Q. Why do you not have the Arabic text alongside its translation?

A. The whole purpose of the program is to allow as many mobiles and users as possible to read and understand the translation of the Holy Quran. Adding Arabic support makes the program bulky in size and requires double the space and memory. Doing so would defeat its purpose as a light-weight mobile software for reading the Translation of the Holy Quran.

In the future we might add Arabic support when newer mobiles come out with larger memory sizes.

Q. Why are you selling Quran Reader Pro? You should give it out for free!

A. Search Truth is a non-profit organization. Our aim and objective is to provide people with as much information regarding the Sunnah and the Quran as possible. All money earned goes to further development and maintenance of free tools and services, which you will in shaa Allah see in the future.

Q. I think my software has a bug/problem, what can I do?

A. Report it! www.searchtruth.com/contactus.php

Please include your mobile's model, brand etc and the version number of the QuranReader you've installed. You can find out about the version by clicking "About" under the Menu options. We will not be able to help without little or no reason.

Q. I have suggestions. What can I do?

A. Feedback and suggestions are all welcome. Please write to www.searchtruth.com/contactus.php with all your suggestions. In case it's regarding a particular mobile, please include mobile details.